

Eastway Technical Consultants Ltd.

Professionals in Condition Monitoring

Phone: (061) 203933 Fax: (061) 203934 Email: info@eastwaytech.ie

*If a picture says a thousand words.....
A **thermal image** will save you thousands of Euros!*

Is reliability essential to your plant? If so, it is important to realise that predictive maintenance is intelligent maintenance. Predictive maintenance namely Thermal Imaging can locate and identify potential problems in electrical and mechanical equipment, refrigeration systems, underground piping networks and steam systems before they cause failure.

Thermal imaging can detect the following problems in **Electrical Systems**:

- **Loose/Deteriorated** Connections
- **Inductive** Heating
- **Imbalanced** Loads
- **Defective** Equipment
- **Open** Circuits
- **Overload**

Figure 1 illustrates how a thermal image indicates an **overheated fuse**

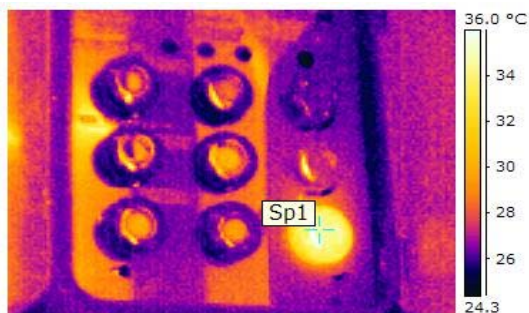


Figure 1

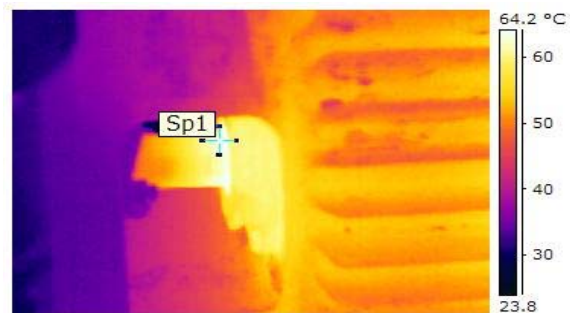


Figure 2

Thermal imaging can detect the following problems in **Mechanical Systems**:

- **Over/ Under tension** of belted systems
- **Misalignment** of coupled equipment
- **Over/ Under lubrication** of bearings
- **Excessive friction**

Figure 2 illustrates how a thermal image indicates the **uneven heating** caused by **misalignment**

BENEFITS of Thermal Imaging include:

- **Locates problems quickly, with minimal disturbance**
- **Prevents premature failure**
- **Increases equipment reliability and life**
- **Minimises downtime by predictive maintenance**
- **Drastically reduces number of costly unscheduled power outages**
- **Identifies potentially dangerous and hazardous equipment**
- **Gives temperature readings**
- **Reduces unnecessary energy consumption**

Contact us for a free quotation for your thermal imaging survey